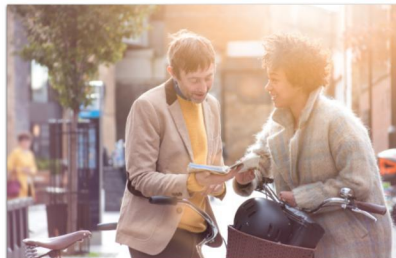
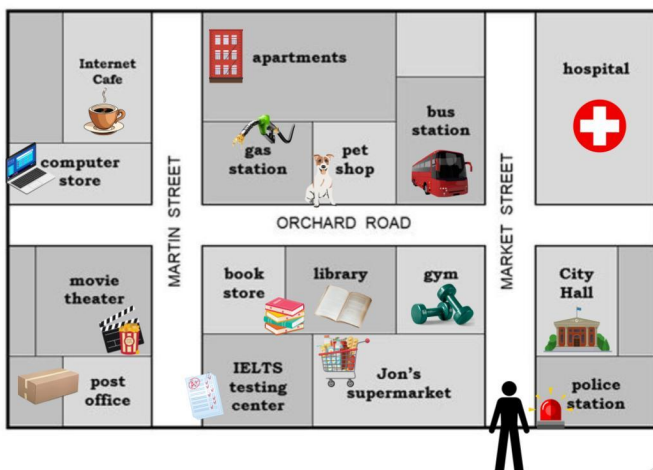


# GIVING DIRECTIONS

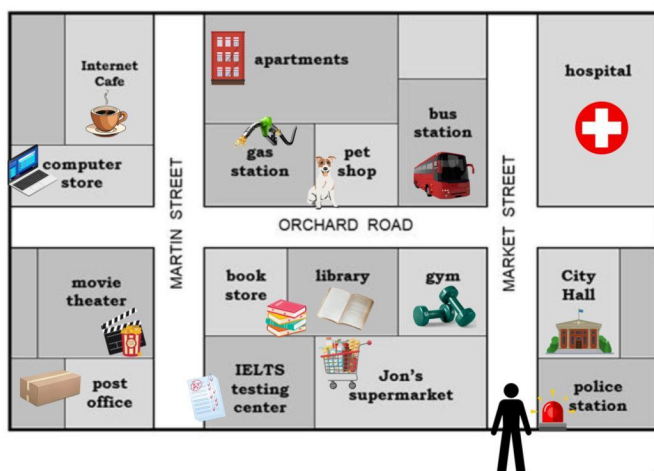
Excuse me.  
How do I get to ...?  
Please?



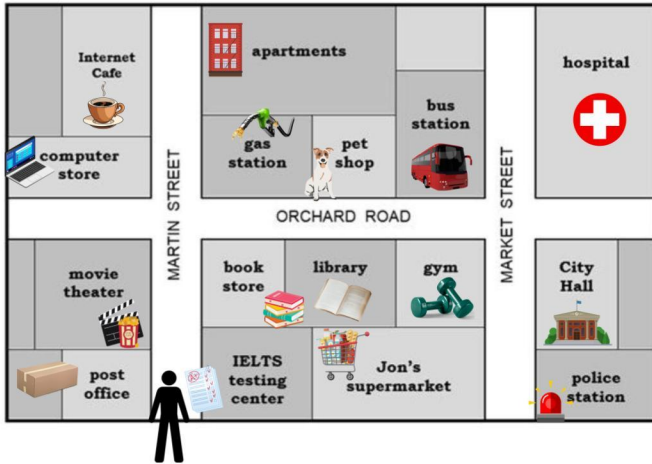
Thank you!  
Thanks!



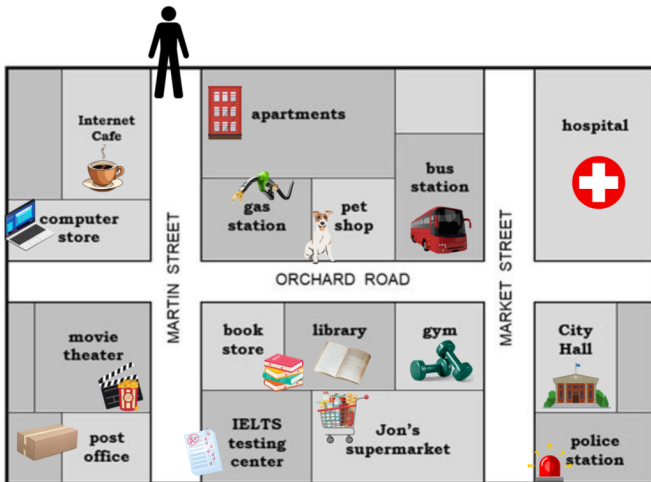
Go straight on Market street.  
Turn left on Orchard road.  
This place is **on the right**.  
Between the bus station and gas station.



Go past the city hall.  
Cross Orchard road.  
This place is **on the left**. It's  
opposite the hospital.



Go straight on Martin street.  
 On Orchard road, take the first turning on the left.  
 This place is on the right. It's on the corner, beside the Internet cafe.



Go down on Martin street.  
 Turn left on Orchard road.  
 This place is at the end of Orchard road. It's on the right, across the gym.



go down



go straight



across/cross



at the end of



turn left



turn right



take the (first turning)

